

# Welcome Back

## WE APPRECIATE YOU!

We cannot say enough how much your partnership and collaboration mean to us during these unprecedented times. Each day we are having the opportunity to connect, discuss, problem solve and innovate with you. Thank you for leaning into this challenging work with us as the grammar of education has changed. We know that as we embark on this school year we will have more opportunities to be thought partners and to reimagine education for your student and all students. We want to take this opportunity to reach out and share our commitment to your child, their IEP, and your family as we navigate this new school year.

This global pandemic has had a profound impact on every family and relationship, and we know that it has often had a disproportionate impact on some families, including families of students who experience a disability. We want to pause and say thank you. Thank you for leaning in. Thank you for jumping in. It is with such deep respect and gratitude that we thank you for the lift that you have been navigating and embracing. We look forward to working together this year!

Lauren, Stephanie and Jennifer

**Lauren Brigsby**

Director of Special Education

[brigsbyl@wlwv.k12.or.us](mailto:brigsbyl@wlwv.k12.or.us)

**Stephanie Clawson**

Assistant Director of Special Education

[clawsons@wlwv.k12.or.us](mailto:clawsons@wlwv.k12.or.us)

**Dr. Jennifer Spencer-Iiams**

Assistant Superintendent of Student Services

[spencerj@wlwv.k12.or.us](mailto:spencerj@wlwv.k12.or.us)

## Getting Started with Comprehensive Distance Learning

We are starting this school year in Comprehensive Distance Learning and your child's services will be delivered remotely as we start school. Your child's team will be collaborating with you to implement your child's Individualized Education Plan. This will look different than the spring. We will be leaning into synchronous instruction and be connecting with your student through live virtual instruction. We have access to new virtual tools, curriculum, and resources. Our teachers have been learning more about the Florida Virtual Platform and curriculum. As the return to work they will be jumping in more to additional curriculum resources and strategies to stay connected and engaged with our learners.



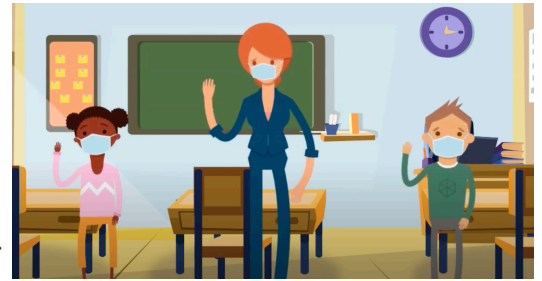
The first week of school will be a *soft start* and an opportunity for your child to connect with classmates, teachers and learn the new routines and school structures. This is also a chance for you and our educators to connect and discuss your child's educational programming. You are a key member in our planning and delivery of instruction. We are embracing the potential for flexibility of how to provide educational experiences this year. Talk to us about what works for your family. For some families live video instruction will be a fantastic instructional method. We have also heard for some families that it will not work with their schedule. We have ideas! Connect with your team about what works for your family.



[W]e hope that we return better than before, taking ideas that we implemented during pandemic teaching and applying them in new situations. The constant, however, remains the same: to ensure that students are learning.” (Fisher, Frey, Hattie, 2020)

## Unpacking Limited In-Person Instruction

In the August 11th Oregon Department of Education (ODE) guidance, the optional possibility of Limited In-person Instruction (LII) was outlined. We understand the underlying goal of this LII guidance is to address issues of equity where in-person instruction may be a powerful tool in supporting student learning. This is a goal that is a high priority for us. However, we are continuing to unpack the implications of this for the students it is meant to serve. We wrestle with the question about bringing some students back on campus when our county health metrics still indicate significant concern about virus spread. In addition, LII is intended to support students whose needs are not being fully met with our Comprehensive Distance Learning (CDL) model, and it is expressly not allowed to offer LII by demographic or eligibility categories. This means that we cannot simply determine to implement LII for all students who receive services through special education.



Our Comprehensive Distance Learning model is new and we do not yet know who is and is not benefiting from it. We need to lean into CDL, partnering with you and establishing those opportunities for authentic engagement. We learned a lot about student engagement and access through the spring and our extended school year program and are continuously reminded about the strength and resilience of our students.

At this time, we are not planning to start the year with any Limited In-Person Instruction, but we will develop areas of data to determine if we may need to institute some LII in the future. We plan to lean into Comprehensive Distance Learning with your family, stay connected in our partnership by creating opportunities for engagement for your child while using a data driven process to guide our decisions.

## Personal Support Workers through DD Services

If your child qualifies for through the Office of Developmental Disabilities Services (ODDS) for support from a Personal Support Worker (PSW), we are excited to learn that “summer hours” are being extended! PSWs are provided through Development Disabilities Services and cannot replace the role of parents or teachers in Distance Learning. Your PSW may be able to support with access while in the home and this could look like supporting with prompting to attend to the teacher during instruction or providing access to reinforcers, token boards, or visuals for supporting engagement. Connect with your DD services coordinator for more information.



We look forward to growing with you and strengthening our partnerships this year!

## We Have a New Parent Email LISTSERV

We have a New Listserv for parents of students who receive support through Special Education! Consider Opting into this listserv so that we can communicate updates and opportunities for you and your family!



**Please sign up** so that you can receive more frequent updates and timely information about special education services and student services

Link: <https://listserv.wlww.k12.or.us/self-service/>

*Signing up requires a passcode. If you do not remember your passcode, you can select "Forgot your passcode?/ Don't have a passcode?" and a passcode will be sent to your email address.*

## Resources for families

Several local agencies are offering some fantastic resources for families. Check them out! As we learn about resources, we can send them out with the new parent email listserv!



Columbia Regional Programs has many resources for Learning at Home, focused on students who experience autism, visual impairments or hearing impairments.

<https://www.crporegon.org/site/Default.aspx?PageID=428>



NWDSA is hosting some parents support virtual meet-ups for parents of children who experience disabilities, in English and Spanish: <https://nwdsa.org/>



FACT Oregon is hosting several informational seminars about supporting your child during Comprehensive Distance Learning as well as Understanding the IEP process: <https://factoregon.org/>

